

# Mining For a Better Society: Zijin's ESG Practice

Robin WANG , Executive Chairman

Zijin (Singapore) International Mining Pte. Ltd.

06/06/2023



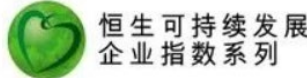



# Brief Introduction of Zijin Mining

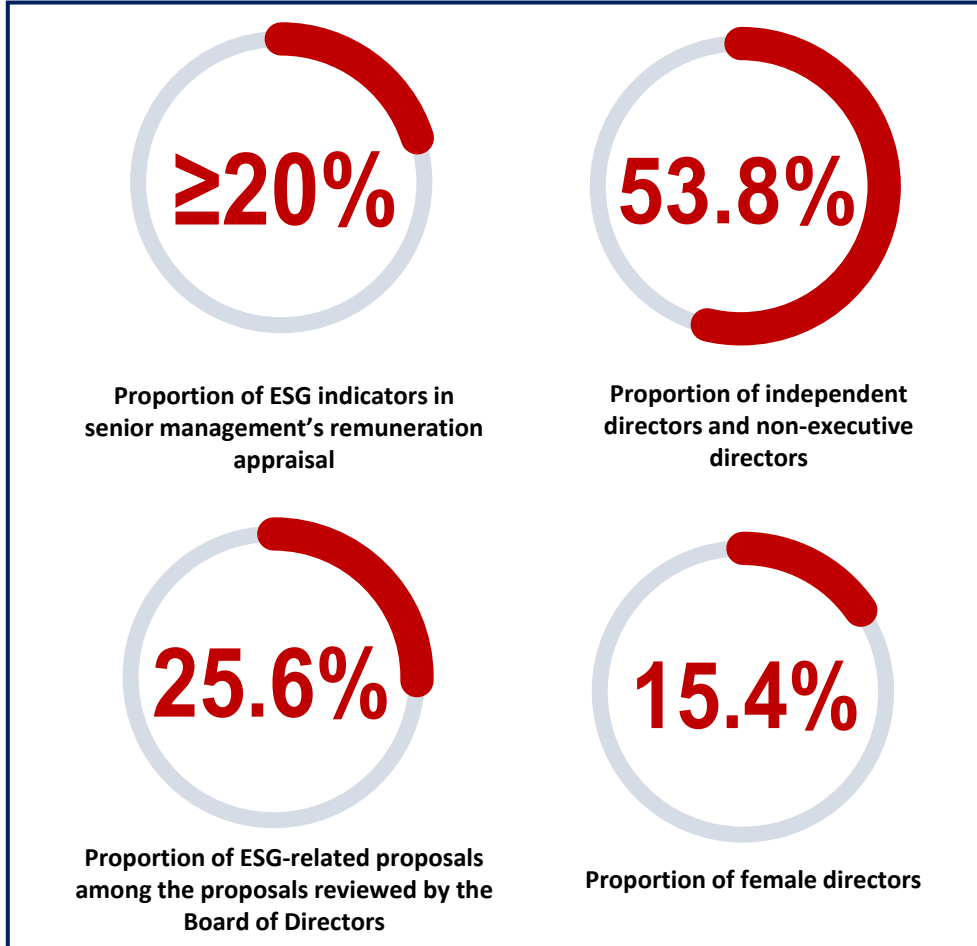
- Listed in Hong Kong and Shanghai Stock Exchanges, with market cap: US\$ 40+ billion;
- Operating in 16 countries, with 48,000+ employees, across Africa, Asia, Europe, Oceania and South America;
- One of the world's top ten producers of copper, gold and zinc, with 2022 mined metals:
  - Copper: 880kt
  - Gold: 1.8 Moz
  - Zinc: 450 Kt
  - Aim to produce 120 kt LCE by 2025

## ESG matters:

- **Our objective:** Green, high-tech, leading global mining company.
- **ESG rating:** improved mainstream ESG ratings.

ESG ratings	
 <p><b>S&amp;P Dow Jones Indices</b> A Division of S&amp;P Global</p>	Raised from 37 to <b>54</b> , ranked in the top <b>12%</b> of the global metal and mining industry
 <p><b>CDP</b> DISCLOSURE INSIGHT ACTION</p>	Climate change: <b>D → B</b> Water management: <b>C → B</b> Ranked in top <b>11%</b> in the mining industry
 <p>恒生可持续发展 企业指数系列</p>	Keeping grade <b>A-</b> , included in Hang Seng (China A) Corporate Sustainability Index for <b>4 consecutive years</b>
 <p><b>MSCI</b></p>	Raised from <b>CCC</b> to <b>B</b>

# Governance: Transparency and Accountability



- Issuance of ESG /CSR annual reports for 12 consecutive years
- First TCFD in the Chinese non-ferrous metal industry



# Action Programme on Climate Change



## Application of energy saving technologies

- **Mine:** "more crushing and less grinding" technology transition to reduce carbon emissions
- **Smelter:** low-temperature waste heat recovery and utilisation projects for power generation, steam drying of furnace materials, etc.



## Clean fuel alternative

- Promote electrification substitution on transportation vehicles and steam boilers
- Fujian's first ammonia-to-hydrogen and hydrogenation integrated demonstration station project



## Clean energy alternative

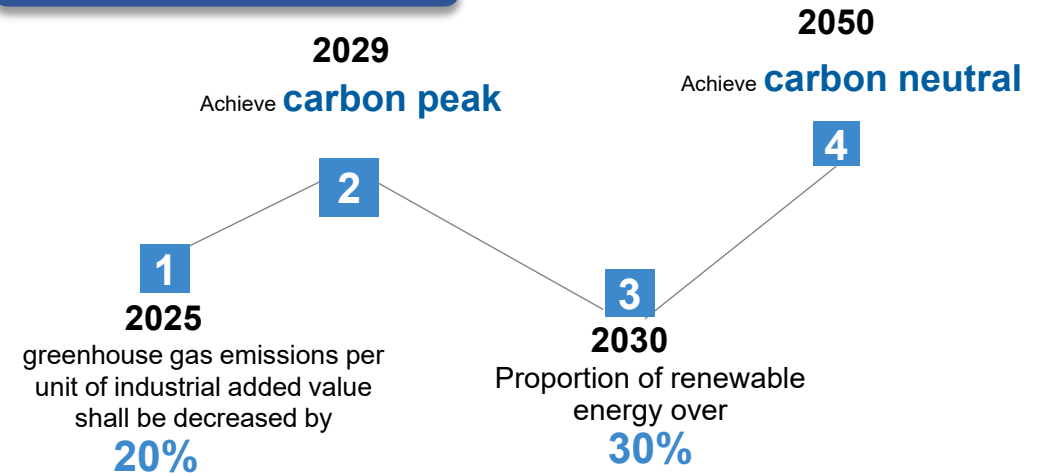
- Installed capacity of clean power : **167.48 MW** (on equity basis), generating **257 million kWh** of electricity and reducing emissions by **146,800 tonnes of CO<sub>2</sub>** equivalent
- Total clean energy use accounted for **32.5%** of total electricity consumption



## Carbon negative

- Restored vegetation of **12.75 million** square meters, planted **1.21 million** trees in 2022
- **66%** of the mines have implemented biodiversity conservation scheme
- ISO 14001 certification coverage **97.5%**
- Investment in environmental protection **RMB1.47 billion** in 2022

## Our targets



## Water Management

- Total Water Intake water intensity decreased by **9.12%** from 2020
- Water reuse rate : **94.3%**



# Labor: Warmth and Satisfaction

6<sup>th</sup>  
ASIA PACIFIC  
PRECIOUS METALS  
CONFERENCE  
4-6 June 2023  
PARKROYAL HOTEL  
ON BEACH ROAD, SINGAPORE

Total Employees **48836**  
**93.6%** local employment  
**14.9%** female employees

**0** human rights violation  
detected

**1,702** , i.e.

**97%** of security  
personnel received human  
rights trainings



# Community: Respect and revitalization

## Actively promote community cultural integration in 6 major areas on 5 continents

### Performance



### Promote community development

Direct economic contribution

RMB **285.4** billion

➤ Paid tax of RMB **12.8** billion

➤ Paid salaries of RMB **9.1** billion

Contributed RMB **455** million

↑ 7.31% into communities

### Transparent community development

**778** community meetings

Received more than **10,000** visitors from the communities

